

# Contents

6. BINUS ONLINE LEARNING .....	1
6.1 Introduction .....	1
6.2 History of BINUS Online Learning.....	1
6.3 BINUS Online Learning Organizational Structure .....	2
6.4 Campus Location .....	2



## 6. BINUS ONLINE LEARNING

### 6.1 Introduction

BINUS UNIVERSITY prepares and organizes BINUS Online Learning as a method of online learning for individuals who eager to learn and develop themselves without being tied to a particular time and place. This method is ideal for students who are currently working as professionals and self-employed worker, high school graduate students or even housewives who want to continue their studies. Learning activities designed to focus on student characteristics and to obtain quality results with the guidance of faculty members and experienced practitioners, making BINUS Online Learning can accelerate student career.

#### Vision

Fostering and Empowering the society in building and serving the nation through nurturing exemplary character, advancing knowledge and promoting innovation (creative, process, technology).

#### Mission

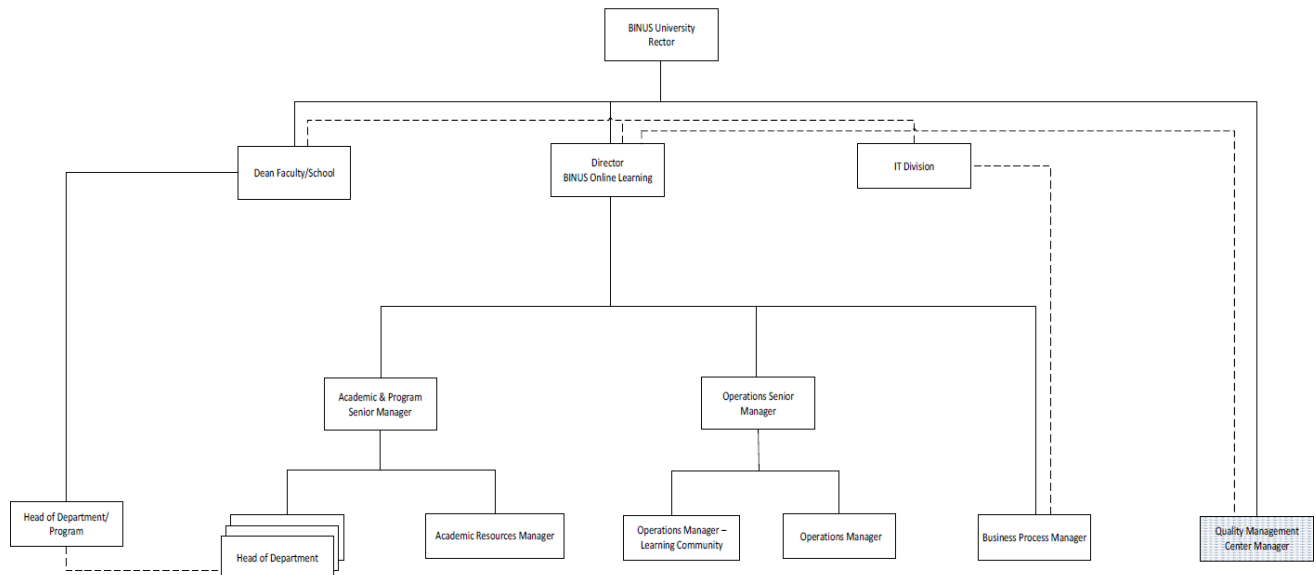
1. Educating Nusantara through holistic online education approach.
2. Answering nation's issues through applied research on the industry or organizations.
3. Fostering BINUSIAN through self-enrichment.
4. Empowering community continuously.

### 6.2 History of BINUS Online Learning

BINUS UNIVERSITY is an information technology-based educational institution that is experienced in conducting education using information and communication technology (ICT) for students. Since 2001, BINUS UNIVERSITY has implemented a multi-channel learning system by using Learning Management System (LMS), which is built by BINUS called Binusmaya. Thousands of digital course content were created and provided to serve over 30,000 active students each semester.

With its experience and its provisions, BINUS UNIVERSITY prepares and organizes BINUS Online Learning, learning method through <http://online.binus.ac.id> website as a medium of learning for individuals who want to learn and develop themselves without having to be tied to a specific time and place.

## 6.3 BINUS Online Learning Organizational Structure



## 6.4 Campus Location

### Syahdan Campus

Jl. K.H. Syahdan No. 9, Kemanggis/Palmerah, Jakarta Barat 11480  
Tel: (+62-21) 534-5830, (+82-21) 535-0660  
Fax: (+62-21) 530-0244

### Anggrek Campus

Jl. Kebon Jeruk Raya No. 27, Kebon Jeruk, Jakarta Barat 11530  
Tel: (+62-21) 53-69-69-69, (+62-21) 53-69-69-99  
Fax: (+62-21) 535-0655

### Bekasi Campus

Jl. Lingkar Bulevar Blok WA No.1, Summarecon Bekasi  
Kelurahan Marga Mulya, Kecamatan Medan Satria, Bekasi 17142  
Tel: (+62-21) 2928-5598  
Fax: (+62-21) 2928-5596

### BINUS @Bandung

Admissions Office 4<sup>th</sup> Floor  
Jl. Pasirkaliki No. 25-27, Paskal Hyper Square,  
Bandung, Jawa Barat 40181  
Tel : (+62-22) 2056 8888  
Fax : (+62-22) 2056 7777

### BINUS @Malang

Jl. Araya Mansion No. 8-22, Araya  
Malang, Jawa Timur 65154  
Tel : (+62-341) 303-6969  
Fax : (+62-341) 303 6868

**BINUS UNIVERSITY Learning Community (BULC) Palembang**

Rukan Taman Harapan Indah, Jl. Letda A. Rozak No. B3 & B5, Palembang 30114

Tel : (+62-711) 562-6222

Fax : (+62-711) 562-6666

**BINUS UNIVERSITY Learning Community (BULC) Semarang**

Gedung Griya Bina Artha (Gedung Bank Jateng), Lantai 3

Jl. Pemuda No. 142, Semarang 50132

Tel : (+62-24) 356-9090

Fax : (+62-24) 358-3836

**BINUS UNIVERSITY Learning Community (BULC) Medan**

Wisma BII, 4th Floor, Unit 409

Jl. Pangeran Diponegoro No. 18

Medan 20152

Tel : (+62-61) 453 3270

Fax : (+62-61) 453 3270

**BINUS UNIVERSITY Learning Community (BULC) Pontianak**

Jalan Putri Candramidi No. 67

(Optik 55), Pontianak 78122

Tel : (+62-895) 3409 19321

