

Contents

6. BINUS ONLINE LEARNING	1
6.1 Introduction	1
6.2 History of BINUS Online Learning.....	1
6.3 BINUS Online Learning Organizational Structure	2
6.4 Campus Location	2



6. BINUS ONLINE LEARNING

6.1 Introduction

BINUS UNIVERSITY prepares and organizes BINUS Online Learning to deliver an online learning method for individuals who are eager to learn and develop themselves without being tied to a particular time and place. This method is ideal for students who are currently working as professionals and self-employed workers, high school graduate students, or even housewives who want to continue their studies. Learning activities are designed to focus on student characteristics and obtain quality results with the guidance of faculty members and experienced practitioners, making BINUS Online Learning appropriate to accelerate students' careers.

Vision

Fostering and empowering the society in building and serving the nation through nurturing exemplary character, advancing knowledge, and promoting innovation (creative, process, technology).

Mission

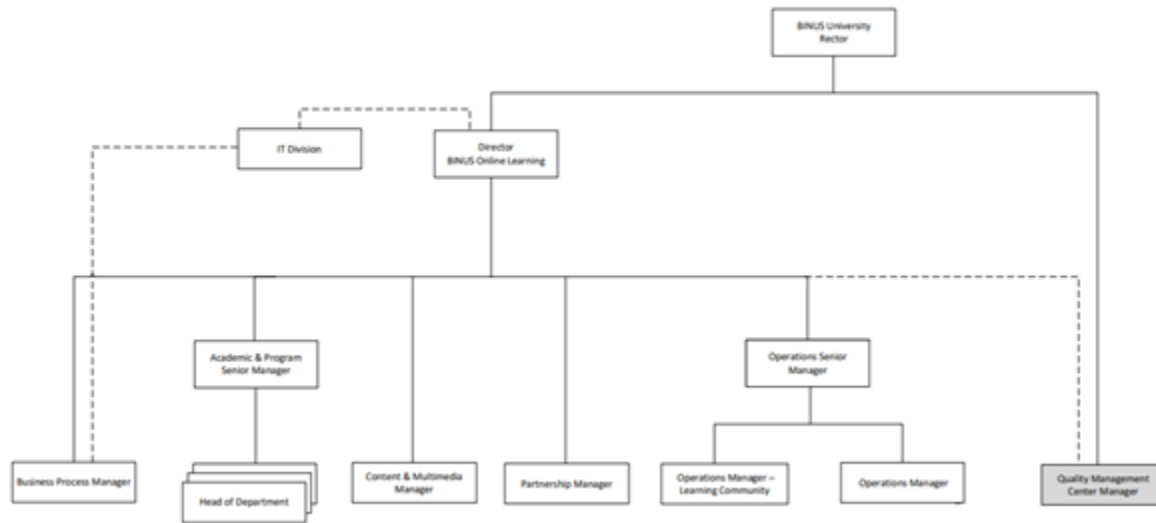
1. To educate the nation through a holistic online education approach.
2. To solve the nation's issues through applied research and advanced technology development.
3. To foster BINUSIANS through a self-enrichment approach.
4. To empower society continuously.

6.2 History of BINUS Online Learning

BINUS UNIVERSITY is an information technology-based educational institution that is experienced in conducting education using information and communication technology (ICT) for students. Since 2001, BINUS UNIVERSITY has implemented a multi-channel learning system by using the Learning Management System (LMS), which was built by BINUS called Binusmaya. Thousands of digital course content items have been created and provided to serve over 30,000 active students each semester.

With its experience and provisions, BINUS UNIVERSITY prepares and organizes BINUS Online Learning. The learning methods are conducted through <http://online.binus.ac.id> as a medium of learning for individuals who want to learn and develop themselves without having to be tied to a specific time and place.

6.3 BINUS Online Learning Organizational Structure



6.4 Campus Location

Syahdan Campus

Jl. K.H. Syahdan No. 9, Kemanggisian/Palmerah, Jakarta Barat 11480

Tel: (+62-21) 534-5830, (+82-21) 535-0660

Fax: (+62-21) 530-0244

Anggrek Campus

Jl. Kebon Jeruk Raya No. 27, Kebon Jeruk, Jakarta Barat 11530

Tel: (+62-21) 53-69-69-69, (+62-21) 53-69-69-99

Fax: (+62-21) 535-0655

Bekasi Campus

Jl. Lingkar Bulevar Blok WA No.1, Summarecon Bekasi

Kelurahan Marga Mulya, Kecamatan Medan Satria, Bekasi 17142

Tel: (+62-21) 2928-5598

Fax: (+62-21) 2928-5596

BINUS @Bandung

Jl. Pasirkaliki No. 25-27, Paskal Hyper Square, Bandung, Jawa Barat 40181

Tel : (+62-22) 2056 8888

BINUS @Malang

Jl. Araya Mansion No. 8-22, Pandanwangi, Blimbing Kabupaten Malang, Jawa Timur 65154

Tel : (+62-341) 303-6969; Fax : (+62-341) 303 6868

BINUS UNIVERSITY Learning Community (BULC) Palembang

Rukan Taman Harapan Indah, Jl. Letda A. Rozak No. B3 & B5, Palembang 30114

Tel : (+62-711) 562-6222; Fax : (+62-711) 562-6666

BINUS @Semarang

POJ Avenue Kav. 3

Kel. Tawangsari, Kec. Semarang Barat, Kota Semarang

BINUS EDU PARK

